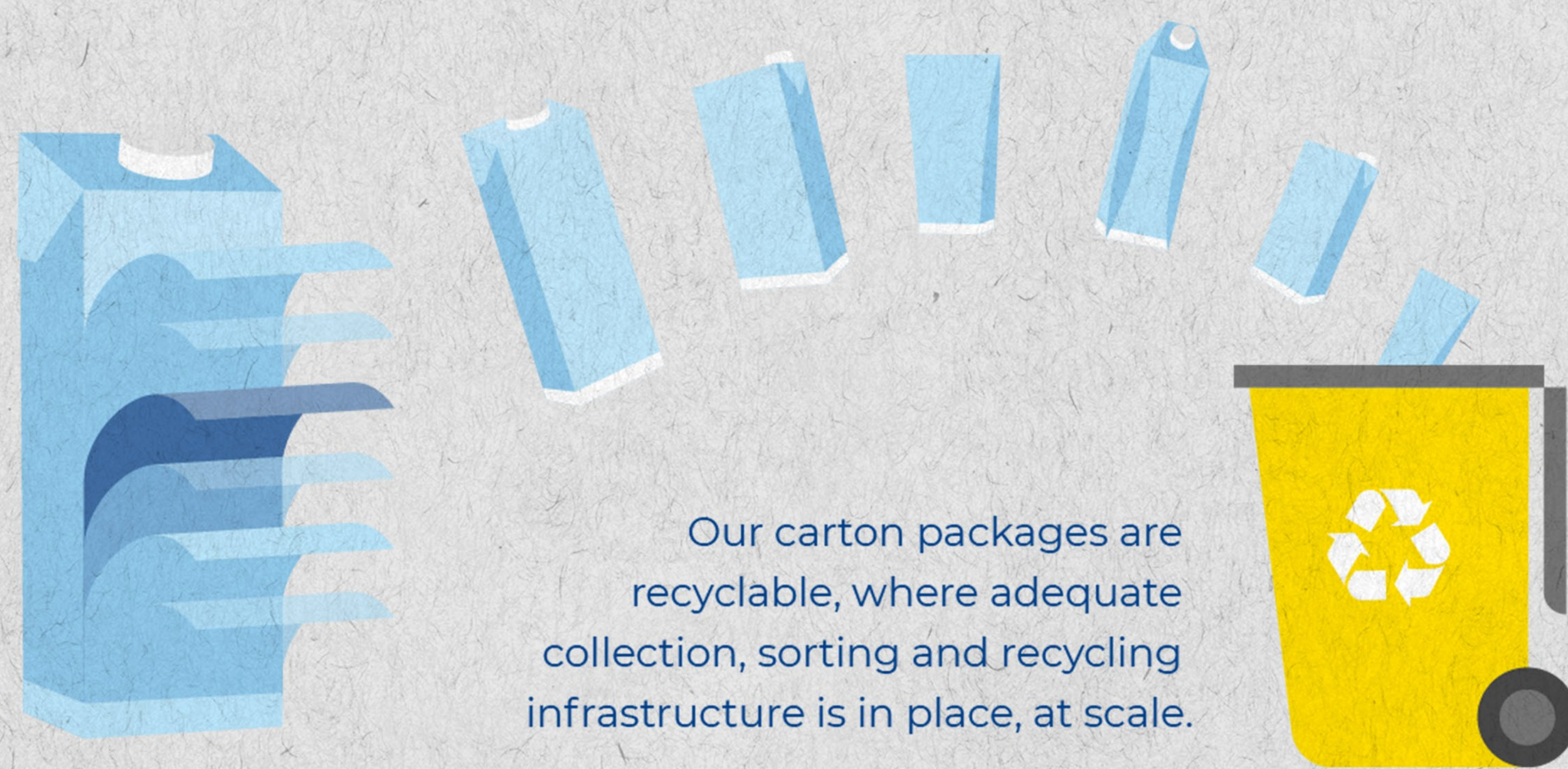


The recycling journey of paper-based Tetra Pak® cartons

An average Tetra Pak® carton is made of about **70% paperboard**, **25% plastic** and **5% aluminium** to protect its contents.



Our carton packages are recyclable, where adequate collection, sorting and recycling infrastructure is in place, at scale.

1 You can give carton packages a new life

Start recycling in 3 simple steps:

- Fully empty your beverage carton
- Flatten the package
- Place the whole package, including the cap, in the correct recycling bin



2 Collection and sorting

Once collected, the cartons are separated from other packaging and sent on to the paper mills.

Collection and sorting differ from market to market.

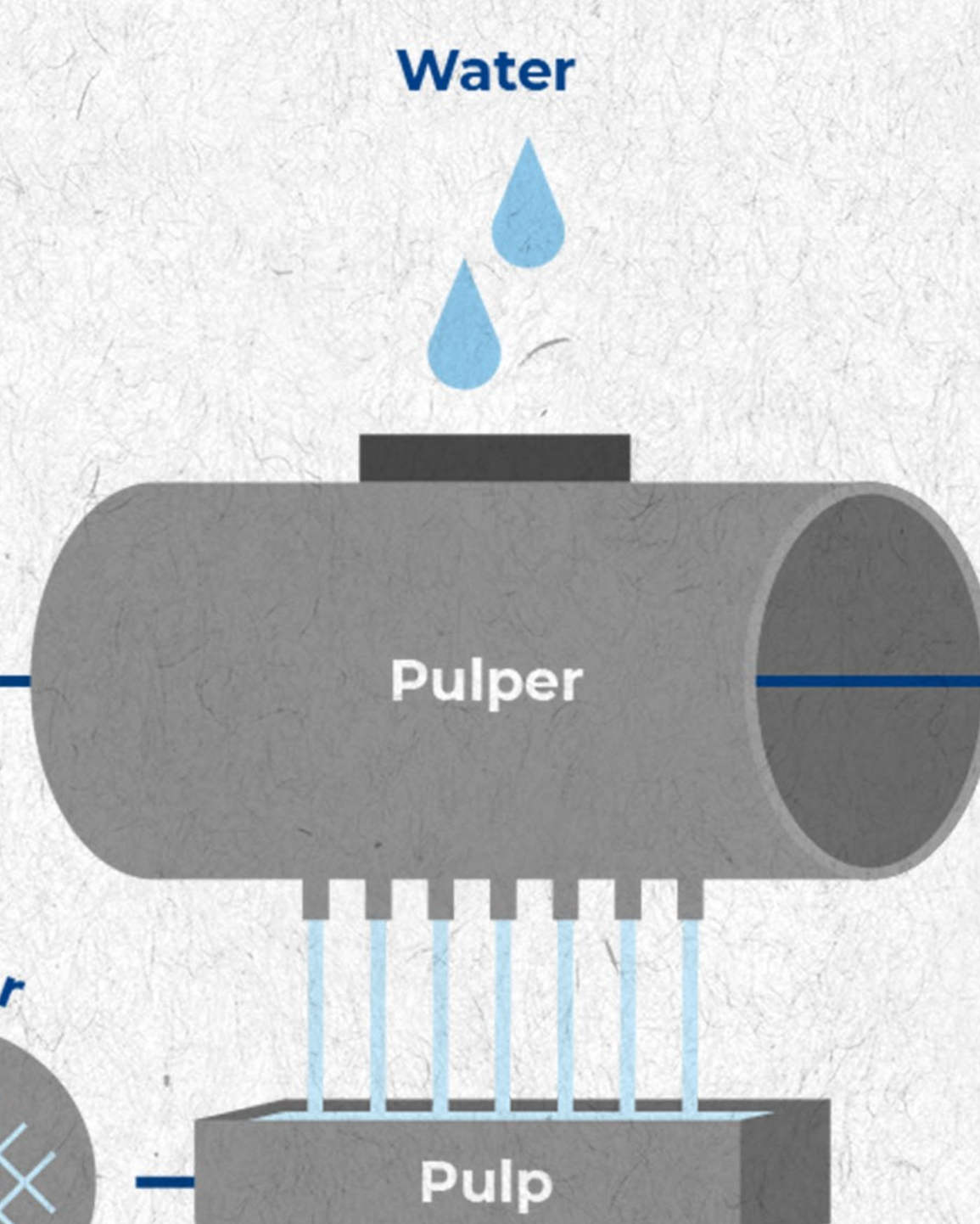
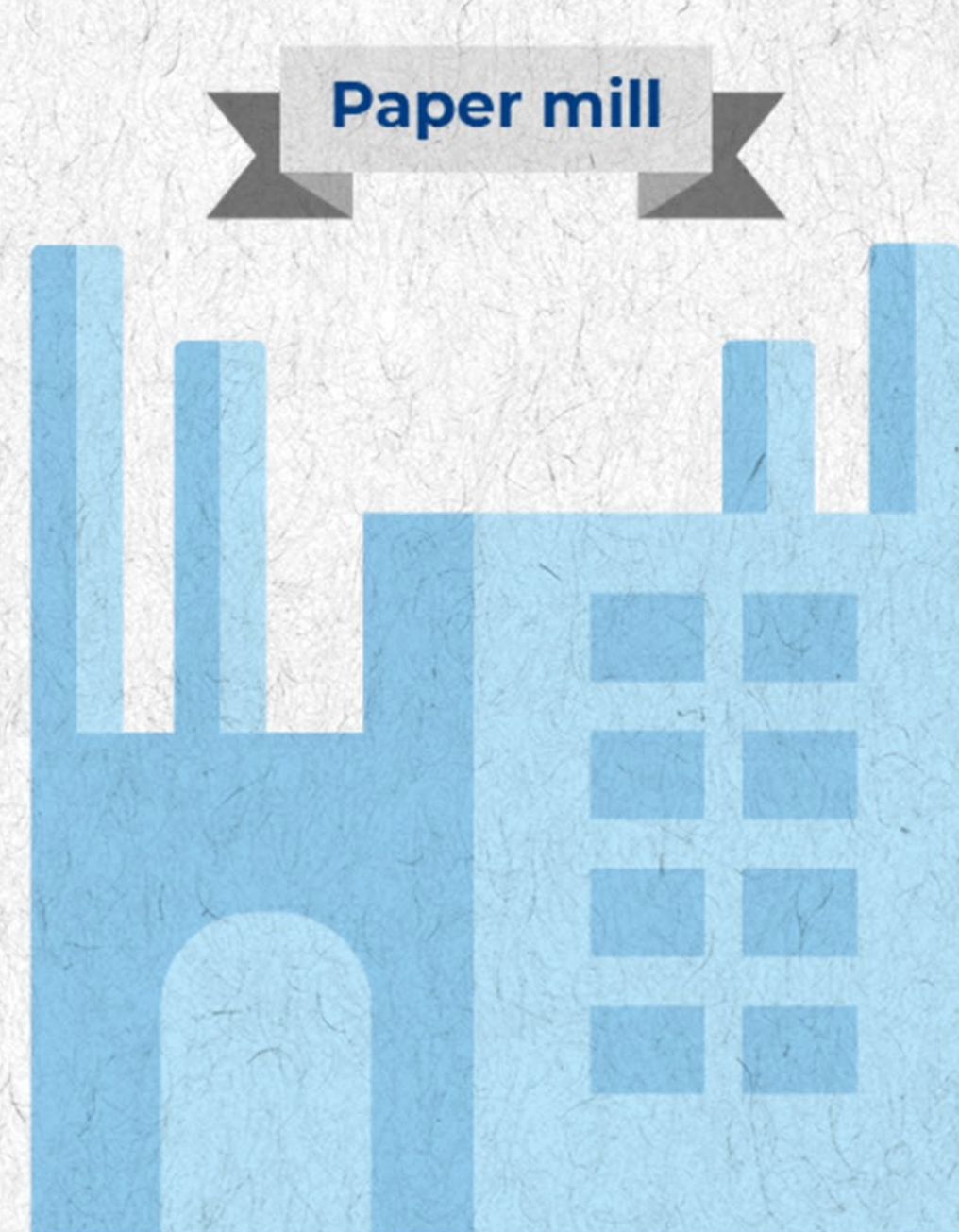


Waste management plant



3 At the paper mills

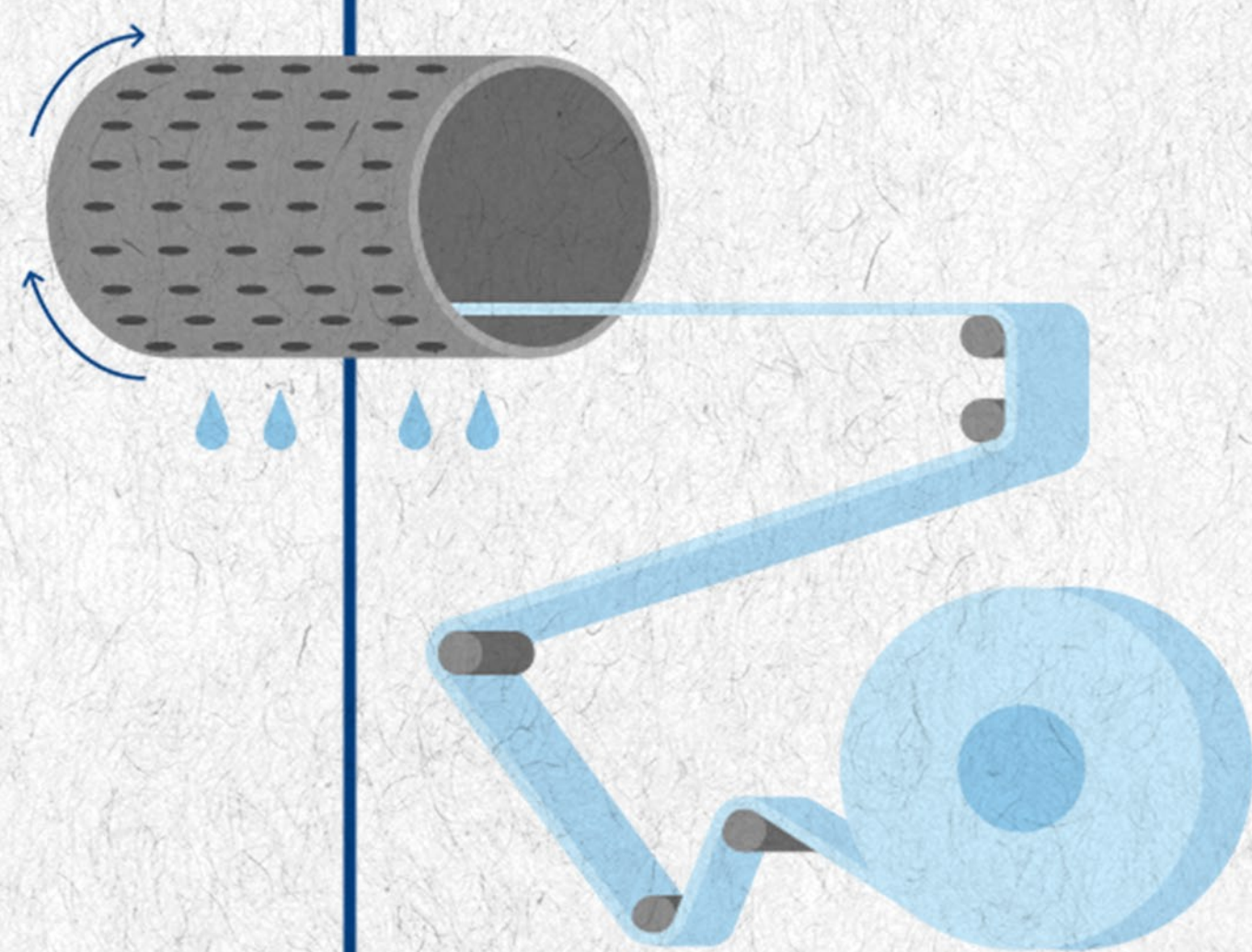
The cartons are loaded in a pulper and blended with water. This separates the paper from the polymers and aluminium.



4

Recycling of paper fibres

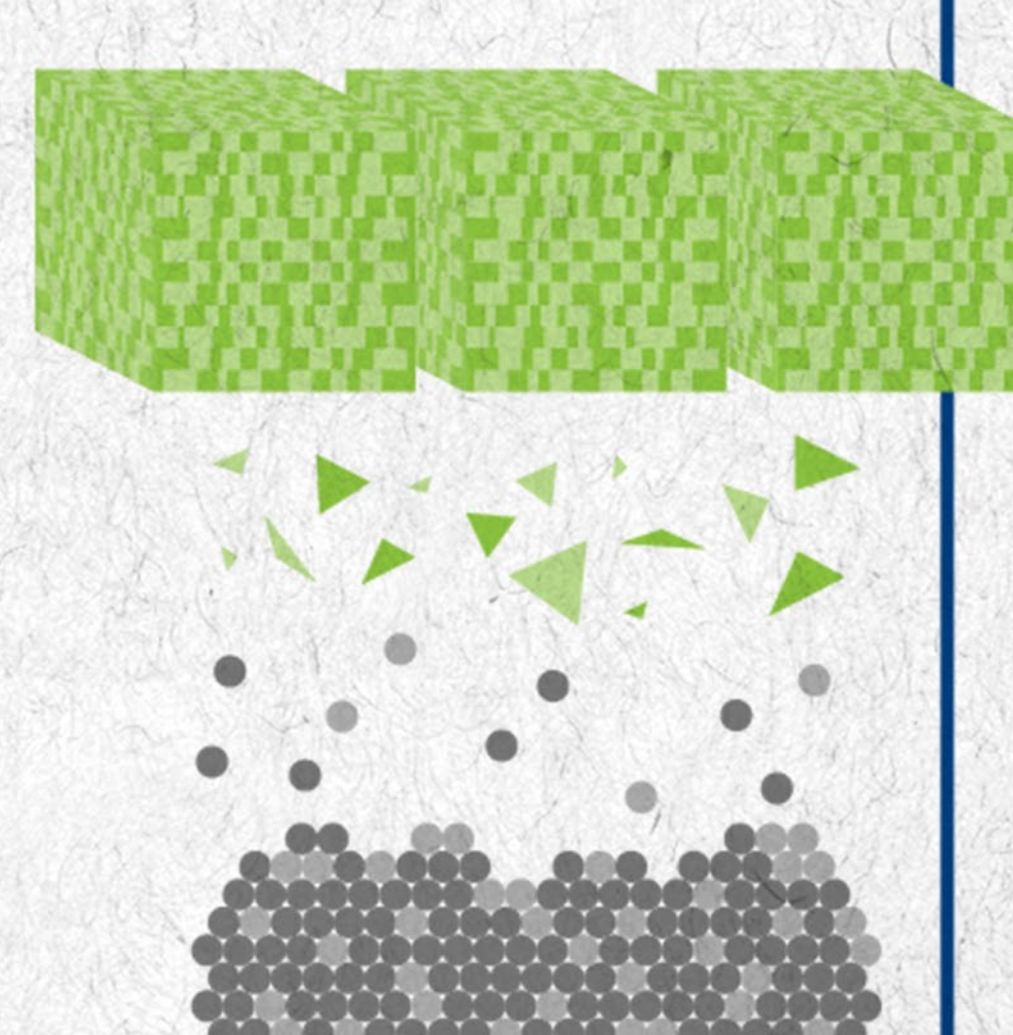
The paper fibres are cleaned, pressed, dried, and then formed into paper rolls.



5

Recycling of polymers & aluminium

Meanwhile the polymers and aluminium (PolyAl) are extracted and shredded together, and then turned into granules.

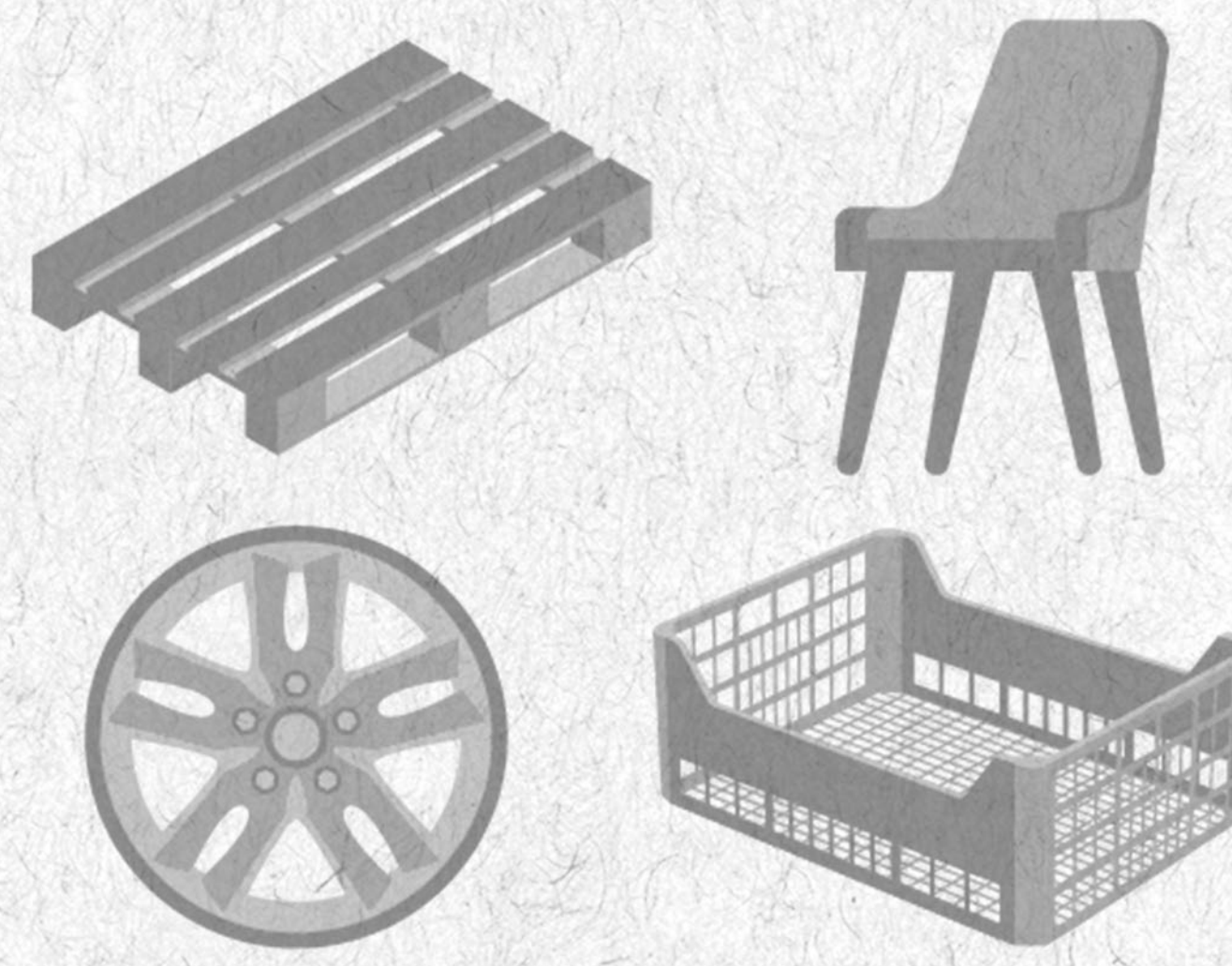


New life of Tetra Pak® cartons

From high-quality paper products made from pulp...



... to numerous products fabricated from the polymers and aluminium.



Let's collect more cartons for recycling, and together...

Let's GO further



Go nature.
Go carton.

Tetra Pak®
PROTECTS WHAT'S GOOD