



Tetra Pak® Automation and Digital Solutions

Lower your Total Cost of Ownership (TCO) with Smart Material Handling

Do you have these challenges?

The Food & Beverage sector is changing rapidly, with **new trends** and **market factors** that create more challenges for your business.

Changes in your consumer behavior are **increasing the complexity of your supply chain**, with more SKUs, new distribution channels, with the request to access more data about your products.

Staffing's constraints are becoming a reality with difficulties to find and retain skilled operators.

Regulations on sustainability & food safety are impacting you, as well as **increasing raw materials and energy costs**.

To stay competitive, lowering your Total Cost of Ownership is essential, without compromising on safety, quality and sustainability.



**Maximise
plant efficiency**



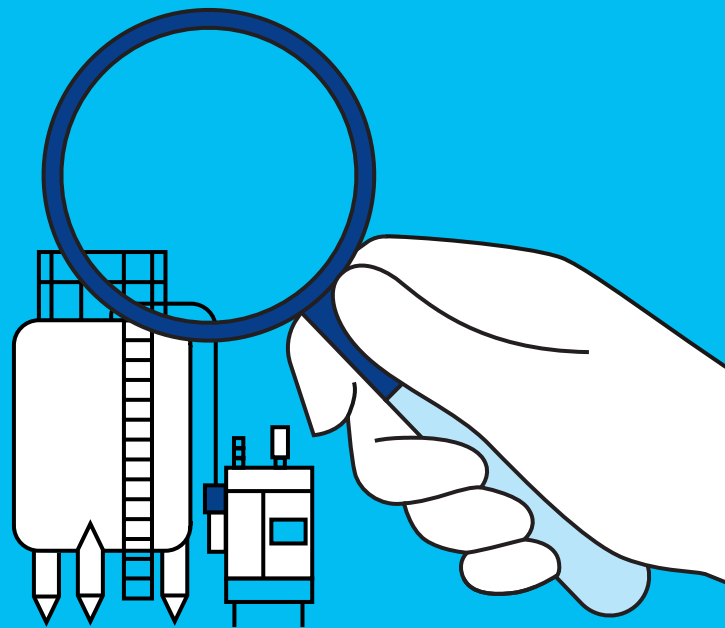
**Secure
safety**



**Product
quality**



**Sustainability
goals**



What is Smart Material Handling?

From Production efficiency to Plant efficiency.

Achieving efficiency on your production lines is a great achievement. As a second step, why not extend your focus to the full plant efficiency by integrating the production with the logistics within your own operations?

The right product at the right place, and at the right time.

Smart Material Handling solutions combine equipment & software to **automate** and **integrate** the flow of material goods & data within the manufacturing, distribution and warehouse operations end-to-end.

Operational areas

Raw material

- 1 Receiving goods
- 2 Incoming goods quality check
- 3 Raw material storage
- 4 Empty pallet check

Production

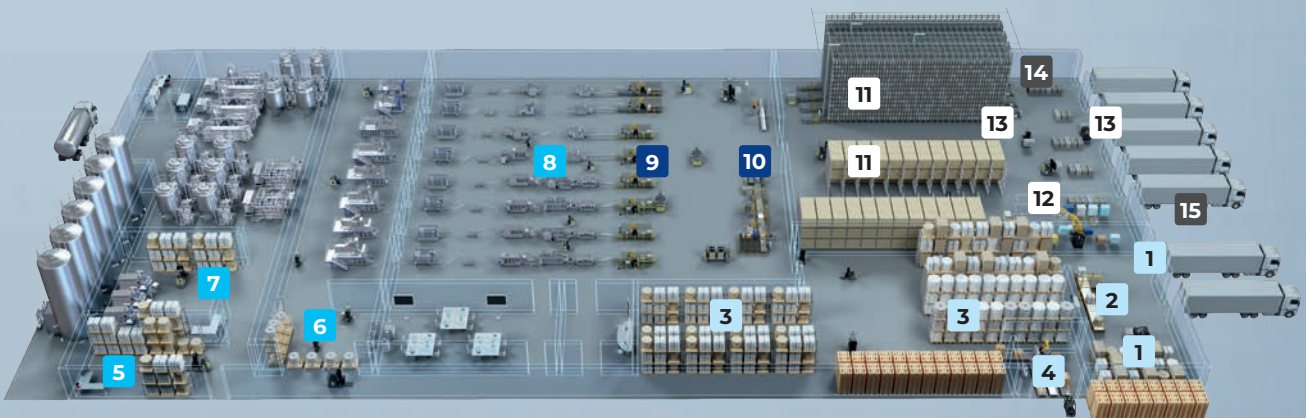
- 5 Ingredient preparation and logistics
- 6 Packaging reel preparation and logistics
- 7 Processing raw material logistics
- 8 Packaging raw material logistics

End of line

- 9 Palletizing and logistics
- 10 Pallet stretch wrapper and logistics

Finished goods

- 11 Finished goods storage
- 12 Picking
- 13 Dispatching goods
- 14 Charging
- 15 Yard management



Lower your TCO by delivering operational excellence.



Secured safety

- Robotic solutions to replace repetitive tasks
- Laser guided vehicles to reduce mixed traffic



Improved productivity

- High mechanical efficiency
- Manpower optimization
- Optimized stock levels by real-time inventory
- Improved order fulfilment process
- Optimal space utilization



Secured quality

- No more manual errors
- Full digital traceability
- Increased pallets quality & stability



Sustainability

- Waste reduction by 100% empty pallet check
- Efficient resources utilization by optimal film consumption



We provide you end-to-end solutions.

To provide you with the best end-to-end solutions from the raw material up to shipping, we've joined forces with one of the industry leader in the Smart Material Handling for the Food & Beverage Industry, E80 group.

Specialised in the development of automated and integrated intralogistics solutions since 1992, E80 group offers the widest range of innovative equipment, with a footprint of over 2,700 robotic systems, 7,000 automatic laser guided vehicles, 50 high-density automated warehouses, installed in more than 400 Smart Factories.



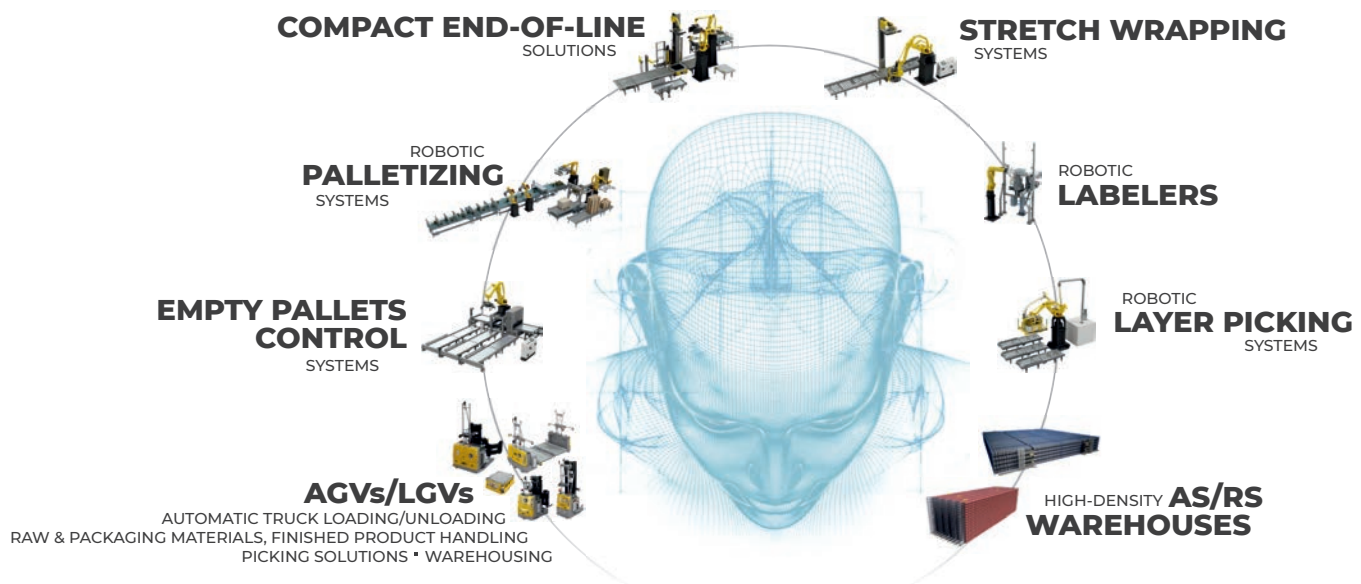
Introducing the portfolio.

First, we help you optimise your material flow by automating and integrating your plant, from the palletizer to your finished good warehouse, pre-staging and shipping operations, but also upstream with the ingredients and consumables to be supplied to the production, and your raw material warehouse.

Next, you automatically capture all validated data in real time with a tailor-made software solution for plant and logistics management.

UNIQUE SOFTWARE PLATFORM

CENTRALLY MANAGES THE ENTIRE FLOW
AND OPTIMIZED ALL OPERATIONS



What we offer you.

- One speaking partner with a unique portfolio range
- Proven partnership with more than 80 solutions delivered
- Contractual system performance
- Integrated Software with solid up-to-date automation platform
- Your plant Digital Twin thanks to Simulation Software
- 3D mapping technology to support your brownfield projects
- Tailored solutions with optimized footprint
- Scalable solutions to support your future growth
- 24/7 customer service



